

WELDING MAGNETS | WELDING CLAMPS  
WELDING PLIERS | WELDING TABLES



**leonerusso.com**  
WELDING AND CUTTING PRODUCTS

# Adjust-O™ Magnet Squares

The *original* magnet squares featuring On/Off switches.

## Adjust-O™ Magnet Squares

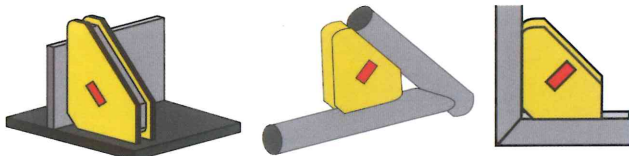
The fast & easy way to hold metal workpieces at 45° & 90°.

- Turn the magnet Off when setting up, turn On when you're ready to work. Fast and safe set-up!
- Ideal for round and square tubing, angle, and flat stock.
- Easy to clean. Simply turn Off and wipe.



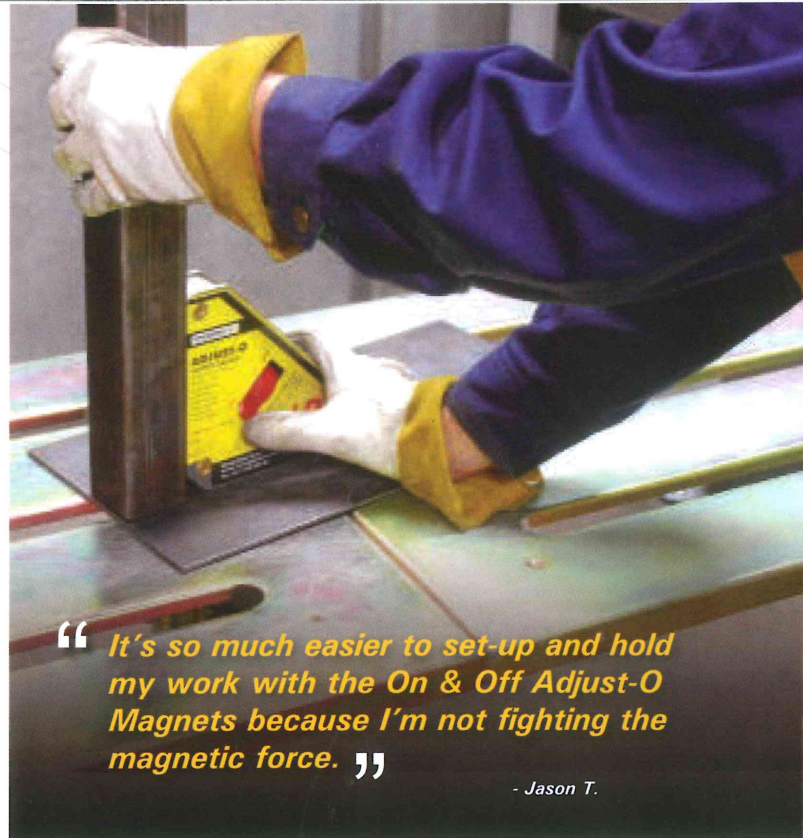
Made with strong, durable rare earth magnets.  
Fully enclosed for easier cleaning.

The On/Off switch



Part No.	Max. Pull Force (kg)	Dimension (mm)	Weight (kg)
MSA46-HD	40	111 x 95 x 29	0.7
MSA48-HD	75	152 x 130 x 35	1.4
MSA53-HD	65	152 x 130 x 35	1.4

\*Magnetic force is based on the longest side of Magnet with 9.5 mm thick steel.



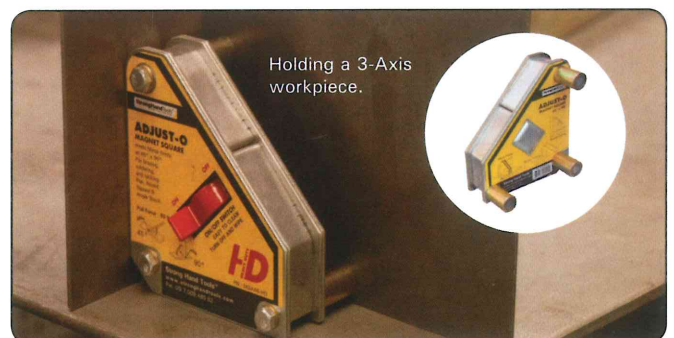
*“It's so much easier to set-up and hold my work with the On & Off Adjust-O Magnets because I'm not fighting the magnetic force.”*

- Jason T.

## 3rd-Axis Magnetic Posts for Adjust-O™ Magnet Squares

- Quickly and easily set-up 3-Axis workpieces.
- Use on either side of the magnet squares.
- Fits all MSA Adjust-O™ Magnet Squares.

MXE13



Part No.	Description	Max. Pull Force (kg)	Weight (kg)
MXE13	3 Posts per set	7	0.1

\*Magnetic force is based on the longest side of Magnet with 9.5 mm thick steel.

# Adjust-O™ Angle Magnet Squares

Angle magnet squares with the convenience of On/Off switches.

## Adjust-O™ Angle Magnet

- Adjustable from 30° - 275° with two On/Off switches.
- Precision machined flat surfaces and nickel/chrome body.
- V-Groove surfaces securely hold round and square tubing, angle, and flat stock.

### MAV120

#### Machined V-Groove

For holding round & flat stock.

2 x On/Off Switch

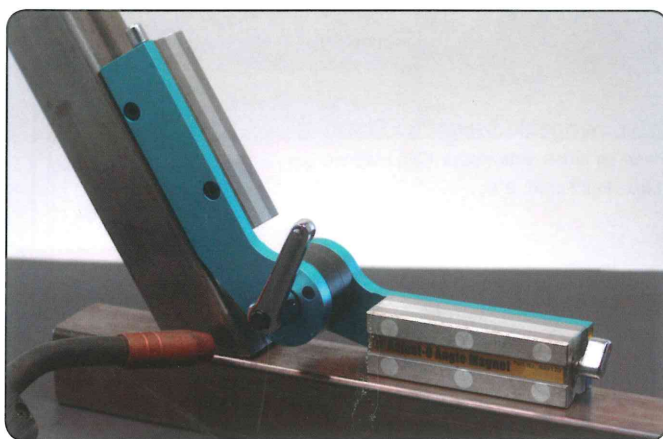
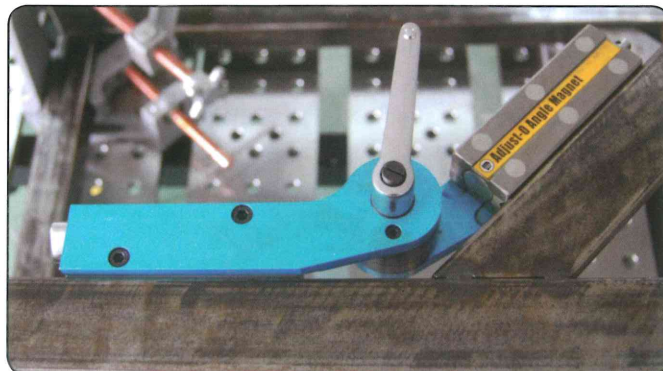
30° - 275°

#### Adjustable Handle

For setting & locking the desired angle.

Part No.	Angles	Max. Pull Force (kg)	Dimension (mm)	Weight (kg)
MAV120	30° - 275°	50	197 x 197 x 95	2.4

\*Magnetic force is based on the 9.5 mm thick steel.



## Adjust-O™ 90° Dual Switch Magnet Squares

For professional jobs that demand strong hold down forces.

Hold flat and round metal work pieces.

- Two On/Off switches for independent operation.
- Turn the magnets Off when setting up, turn On when you're ready to work. Easy and safe set-up!
- Precision machined flat and V-surfaces are ideal for round and square tubing, angle, and flat stock.
- Choose from 55 - 120 kg pull force.



On/Off Switch



#### MS2-80

55 kg Max. Pull force



#### MS2-90

120 kg Max. pull force

Part No.	Max. Pull Force (kg)	Dimension (mm)	Weight (kg)
MS2-80	55	152 x 152 x 38	1.2
MS2-90	120	197 x 197 x 48	2.7

\*Magnetic force is based on the 9.5 mm thick steel.

# Multi-Angle Magnet Squares

Set-up 2 or 3-Axis stock at multiple angles.

## XYZ Magnet Squares

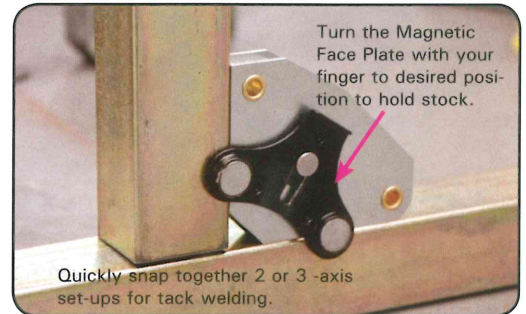
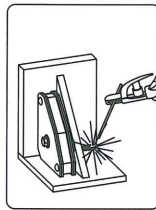
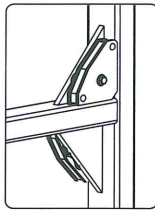
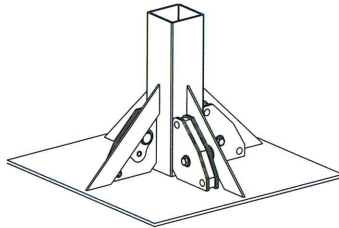
- Quickly and easily set-up 2 or 3-Axis workpieces.
- Re-position, while holding. Tap or slide workpieces to fix positioning, without removing the Magnet!
- New Magnetic Face Plate features two rare earth disc magnets for 3rd axis holding. Turn the Magnetic Face Plate with your finger to desired position to hold stock.



**Interchangeable Magnetic Plate**  
Place on either side of the XYZ Magnet.  
(Max. Pull Force: 3 kg)



Model MS350 shown



Part No.	Description	Max. Pull Force (kg)	Dimension (mm)	Weight (kg)
MST348	Twin Pack	10	59 x 50 x 22	0.3
MS350	Ea.	13.6	86 x 75 x 16	0.34

\*Magnetic force is based on the longest side of Magnet with 9.5 mm thick steel.

## Standard Magnet Squares

Holding at multiple angles while soldering, brazing, and welding at 30°, 45°, 60°, and 90°.

- The compact size of the Mini Magnets makes it easy to pack, store, and carry for use anywhere!
- Accurate 30°, 45°, 60°, 90° angles.
- Center hole for easy handling.



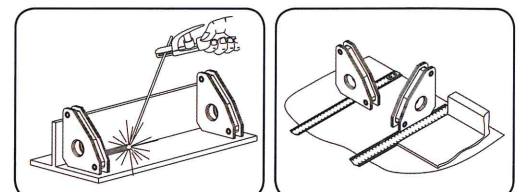
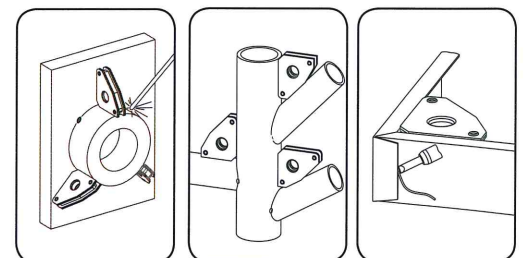
**MS346AT**  
Mini Multi Angle



**MS346AK**  
Mini Multi Angle



**MS346C**  
Multi-Angle



Part No.	Angles	Max. Pull Force (kg)	Dimension (mm)	Weight (kg)
MS346AT Twin Pack	30°, 60° 45°, 90°	10	59 x 50 x 16	0.3
MS346AK 6-Pack	30°, 60° 45°, 90°	10	59 x 50 x 16	0.8
MS346C	30°, 60° 45°, 90°	40	140 x 111 x 19	0.5

\*Magnetic force is based on the longest side of Magnet with 9.5 mm thick steel.

# MagTab™ & Large Mag. V-Pads

Time saving magnetic tools for use in the shop & in the field.

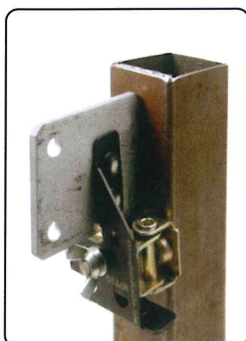
## UNIQUE MagTab™

The better, faster way to hold tabs in place for tack welding!

- Hold tabs, or any small metal pieces, parallel or perpendicular to the substructure.
- The Adjustable Magnetic V-shape base adjusts for different shapes: round, flat, angle metal surfaces.



Perpendicular tab

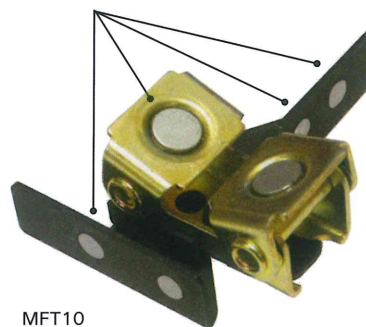


Parallel Tab



Positioning handle

6-pc Magnets ea.



MFT10

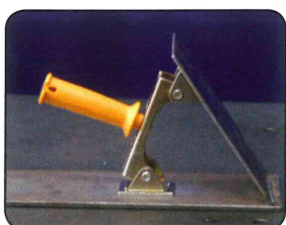
Part No.	Dimension (mm)	Max. Pull Force (kg)	Weight (kg)
MFT10	100 x 76 x 32	8	0.2

\*Magnetic force is based on the 9.5 mm thick steel.

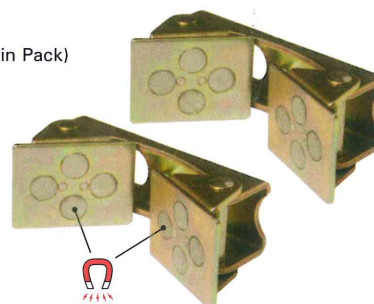
## NEW Large Magnetic V-Pads

Hold and position steel plates at any angle in fixturing, welding, inspection and repair applications.

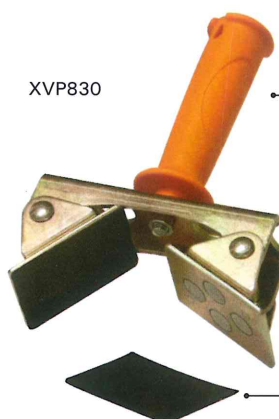
- The Adjustable Magnetic V-shape base adjusts for different shapes: round, flat, angle metal surfaces.
- Four rare earth magnets in each pad provide secure gripping power for rapid and convenient holding and positioning.
- Pads pivot to hold onto round, square or flat metal surfaces.



XPV820 (Twin Pack)



XPV830



- Large, removable comfort handle for control in placing, positioning and removing the clamp.
- The adjustable magnetic V-Pad is easy to remove. Pull back firmly on the handle to break the magnetic force.

Optional Rubber Pads

Part No.	Description	Dimension (mm)	Max. Pull Force (kg)	Weight (kg)
XPV820	Large Magnetic V-Pad, Twin Pack	121 x 51 x 48	26	0.97
XPV830	Large Magnetic V-Pad w/Handle	121 x 51 x 157	26	0.59

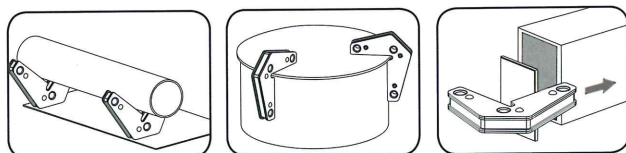
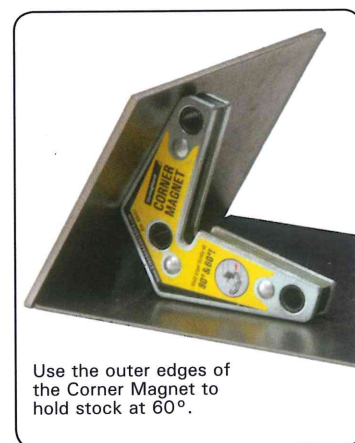
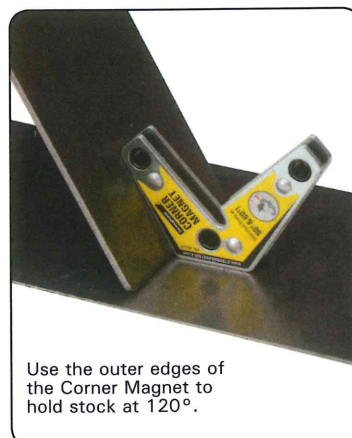
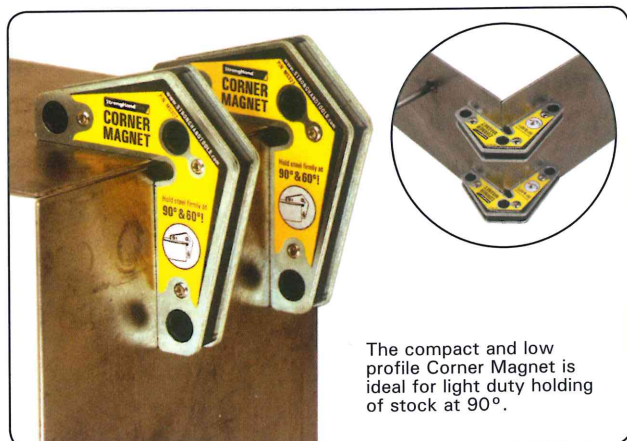
\*Magnetic force is based on the 9.5 mm thick steel.

# Corner Magnets & Mag. V-Pads

Time saving magnetic tools for use in the shop & in the field.

## Corner Magnets

- Create 90° corners by holding from the outside, providing you with an unobstructed area for inside tack welds.
- One side corner "relief" provides clearance for tall lips.
- Use the outer edges of the Corner Magnet for setting up materials at 60°.



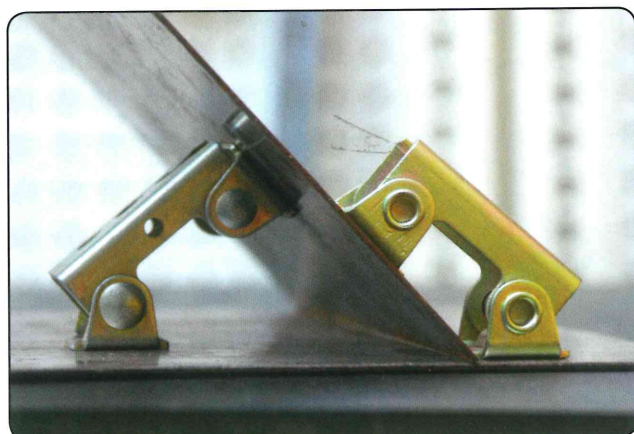
Part No.	Description	Dimension (mm)	Max. Pull Force (kg)	Weight (kg)
MST327	Twin Pack 90° & 60°	83 x 95 x 16	14	0.4

\*Magnetic force is based on the longest side of Magnet with 9.5 mm thick steel.

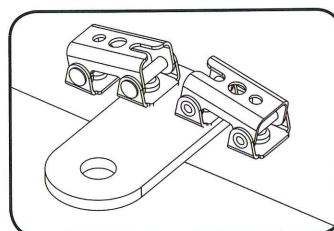
## Adjustable Magnetic V-Pads

Light duty & tight spot holding! Build, Hold, and Position Steel.

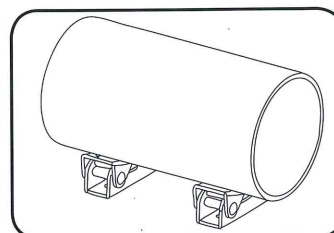
- Hold and position round, flat, and square parts in light duty substructure applications!
- Each V-Pad contains 4 rare-earth magnets.



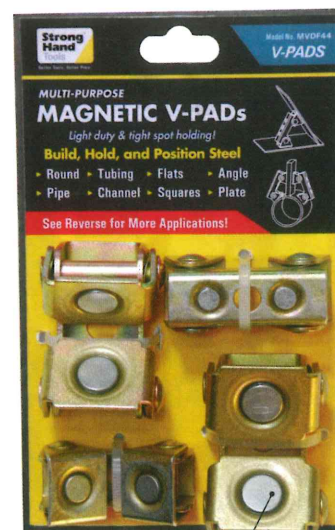
Steady parts for welding.



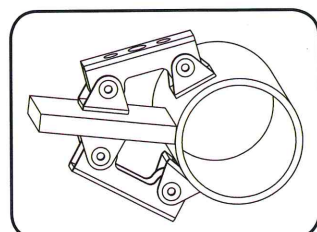
Hold Tabs



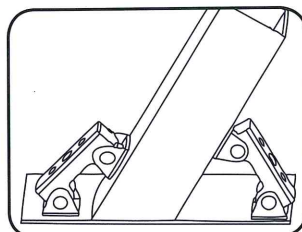
Used as round part rests.



Rare Earth Magnets



Hold tabs for tack-welding.



Hold odd-shapes in position.

Part No.	Description	Max. Pull Force (kg)	Weight (kg)
MVDF44	2 Regular V-Pads (XDV4) & 2 Large V-Pads (XFV4)	8	0.4

\*Magnetic force is based on the 9.5 mm thick steel.

# Snake Magnets & Mag-Levels

Time saving magnetic tools for use in the shop & in the field.

## Snake Magnets

### The Third Hand - *Holds, Bends, Twists*

- Comes complete with 2 magnetic pads and 1 spring clamp.
- MFC318 has a 450 mm cable with 2 flat magnetic pads.

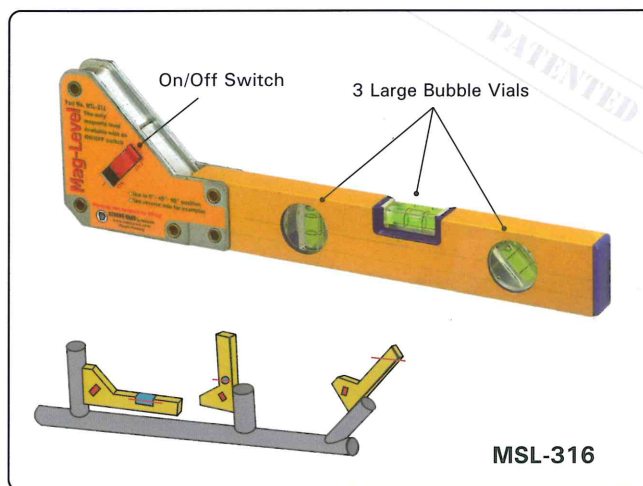


Part No.	Description	Max. Pull Force (kg)	Weight (kg)
MFC318	450 mm flex cable, 1 clamp, 2 flat Magnetic Pads	10	0.6

\*Magnetic force is based on the 9.5 mm thick steel.

## Mag-Level Patent No. US 7,009,480 B2

- The only magnetic level with the On/Off switch.
- Holds securely to round and flat surfaces.
- Three vials for 0°, 45°, 90° reading.



Part No.	Angles	Dimension (mm)	Max. Pull Force (kg)	Weight (kg)
MSL-316	45°, 90° 180°	100 x 406 x 25	30	0.9

\*Magnetic force is based on the 9.5 mm thick steel.

## Torpedo Mag-Levels



### The use-anywhere, view anywhere compact magnetic level.

- 4 strong magnets allow hands-free use on metal surfaces.
- V-Groove on one side for pipe and conduit work.
- Robust, solid anodized aluminum body.



#### 36 mm Chamfer

Allows the level to be easily aligned with the side of the workpiece.



#### Z-Axis Bubble Pod

The add-on pod provides accurate leveling of 2-axes. The pod can be rotated for easy viewing from different angles and heights.



#### Elastic Velcro® Strap (LM3723 only)

Allows the level to be easily attached to non-magnetic surfaces. The strap fits snugly into the hole for safe keeping.

Part No.	Dimension (mm)	Angles	Weight (kg)
LM3723	180 x 32 x 25	0°, 45°, 90°	0.2